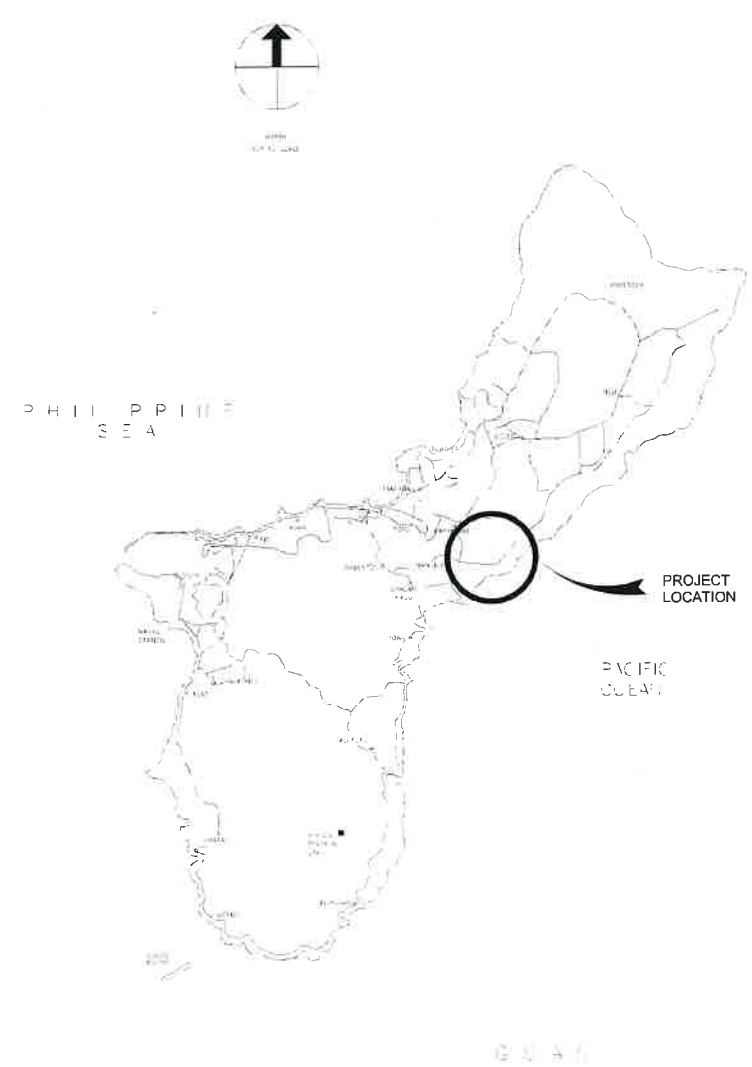


HIGHWAY 15

LOCATION MAP



VICINITY MAP



INDEX OF DRAWINGS

TITLE	
T1.1	TITLE SHEET, LOCATION PLAN, VICINITY MAP
A1.1	FLOOR PLANS
A2.1	ROOF PLANS
A3.1	ELEVATION PLANS
A4.1	FOOTING DETAILS AND FOOTING SCHEDULE
A5.1	ISOMETRIC

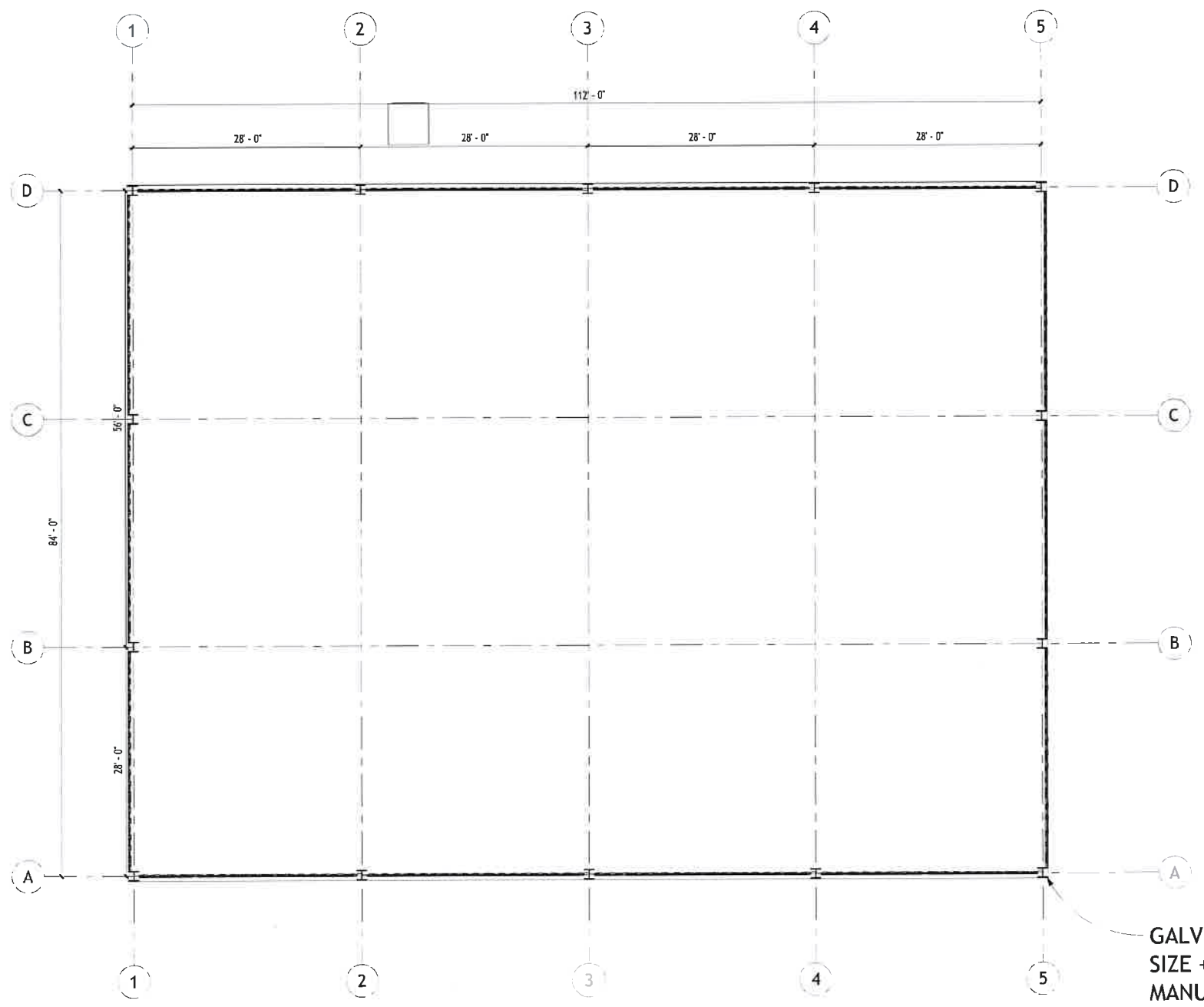
STRUCTURAL NOTES

- A. DESIGN CODES AND CRITERIA:**
- INTERNATIONAL BUILDING CODE, 2018 EDITION
 - BUILDING CODE REQUIREMENTS FOR REINFORCED CONCRETE AND COMMENTARY, ACI 318-14
 - MINIMUM DESIGN LOADS FOR BUILDINGS AND OTHER STRUCTURES, ASCE/SEI 7-10
- B. DESIGN LOADS:**
- LIVE LOADS
 ROOF 30 PSF, MEZZANINE 50 PSF, FLOOR 150 PSF
 - SEISMIC - ZONE 4 REQUIREMENTS
 - WIND LOAD - WIND SPEED AT 190 MPH PEAK GUST, $q_s = 90$ PSF
- C. EARTHWORK NOTES:**
- SOIL BEARING CAPACITY = 2,500 PSF (ASSUMED)
 - FILL MATERIAL SHALL BE NON-EXPANSIVE AND OF ACCEPTABLE GRADATION. FILL MATERIALS (STONE AND ROCK FRAGMENTS) SHALL NOT BE GREATER THAN 4 INCHES AND SHALL BE PLACED IN 10 INCHES LOOSE LIFTS THEN COMPACT AT 98% JF TO BOTTOM OF FINISHED BASE COURSE.
 - BACKFILL AROUND FOOTINGS AND FOUNDATIONS SHALL BE COMPACTED IN LAYERS BY PNEUMATIC TAMPER INTO A DENSE MASS TO NOT LESS THAN 95% DENSITY.
 - ALL EXCAVATIONS SHALL BE PROTECTED AND SECURED BY THE CONTRACTOR AGAINST DANGER TO LIFE, LIMB AND PROPERTY.
 - SHORING, SHEETING, CRIBBING SHALL BE PROVIDED BY THE CONTRACTOR TO PREVENT DAMAGE TO ADJACENT STRUCTURES AND PROPERTIES.
- D. STRUCTURAL STEEL NOTES:**
- ALL STRUCTURAL STEEL SHAPES SHALL CONFORM TO ASTM A36.
 - ANCHOR BOLTS SHALL CONFORM TO ASTM F1554 AND ASTM A307 UNLESS SPECIFIED BY MANUFACTURER
 - THE CONTRACTOR SHALL SUBMIT DESIGN AND SHOP DRAWINGS OF THE PRE-ENGINEERED METAL BUILDINGS FOR REVIEW AND APPROVAL. CONSIDER SOLAR PANELS BE INSTALLED ON THE ROOFS. METAL BUILDING PEDESTAL AND FOOTINGS MAY BE REDESIGNED BASED ON ACTUAL METAL BUILDING FRAME REACTIONS.
 - WELDING SHALL CONFORM TO ASTM AWS D1.1 AND AS D1.3

DATE	07/15/2024
FOR REVIEW	1
AS SHOWN	
TITLE	T1.1

1 2 3 4 5

D
C
B
A

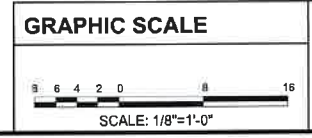


NOTES:

1. PRE ENGINEERED GALVANIZED METAL
2. FRAME DESIGN BY MANUFACTURER.
3. 112 FT X 84 FT NOMINAL BLDG DIMENSIONS



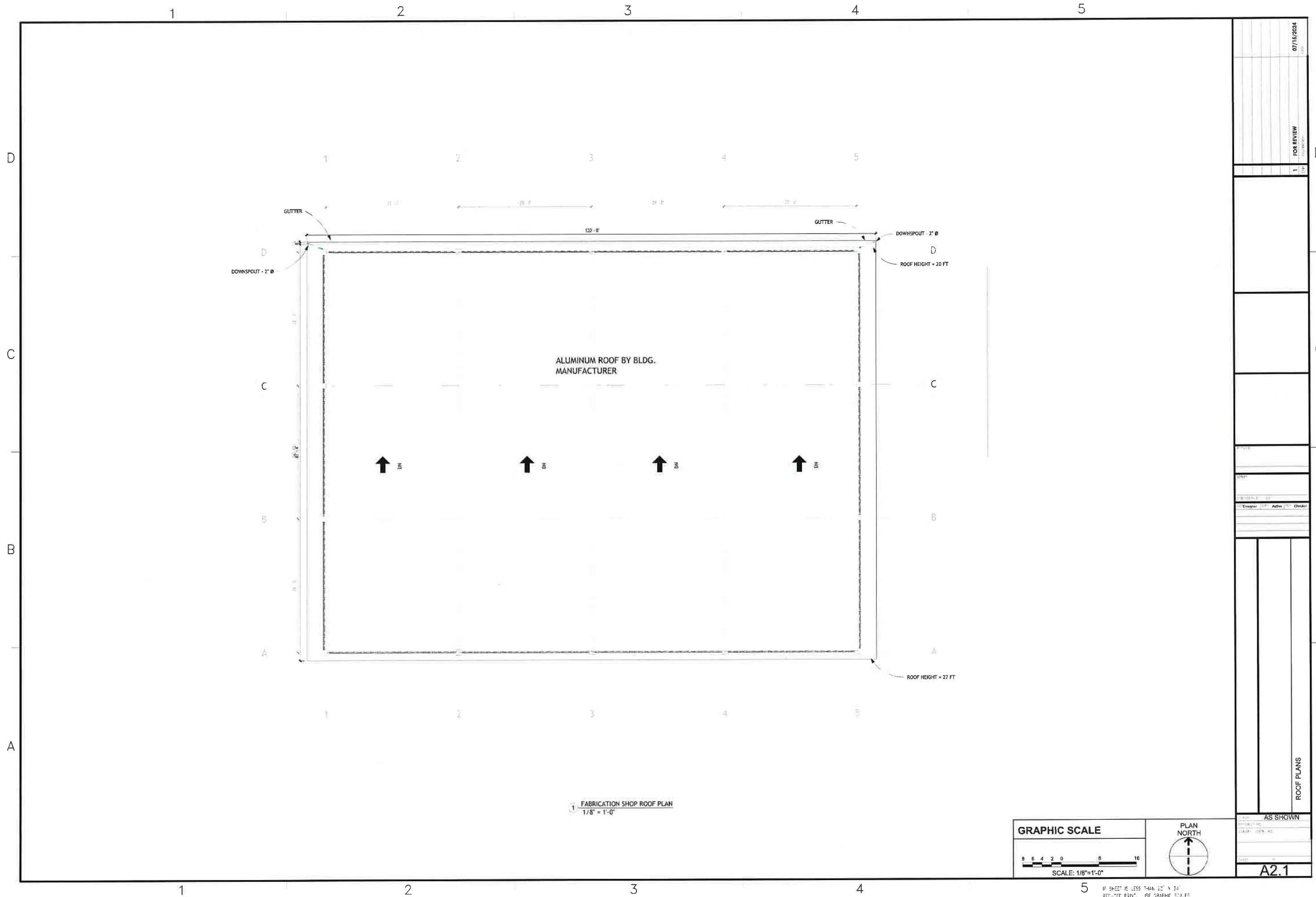
① FABRICATION SHOP FLOOR PLAN LAYOUT
1/8" = 1'-0"



DATE: 07/15/2024	FOR REVIEW
BY: [Signature]	DATE: [Signature]
DESIGNED BY: [Signature]	CHECKED BY: [Signature]
DRAWN BY: [Signature]	DATE: [Signature]
FLOOR PLANS	
AS SHOWN	
A1.1	

1 2 3 4 5

5 IF SHEET IS LESS THAN 22" X 34" REDUCED PRINT - USE GRAPHIC SCALES



1

2

3

4

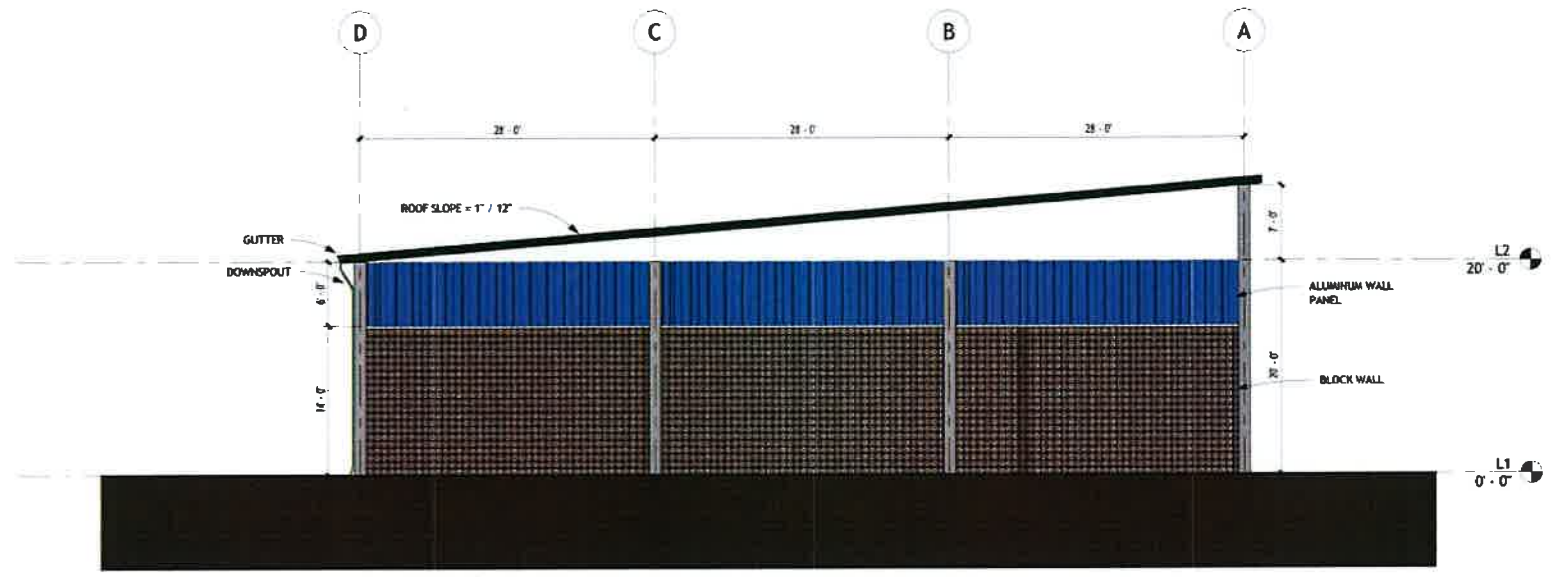
5

D

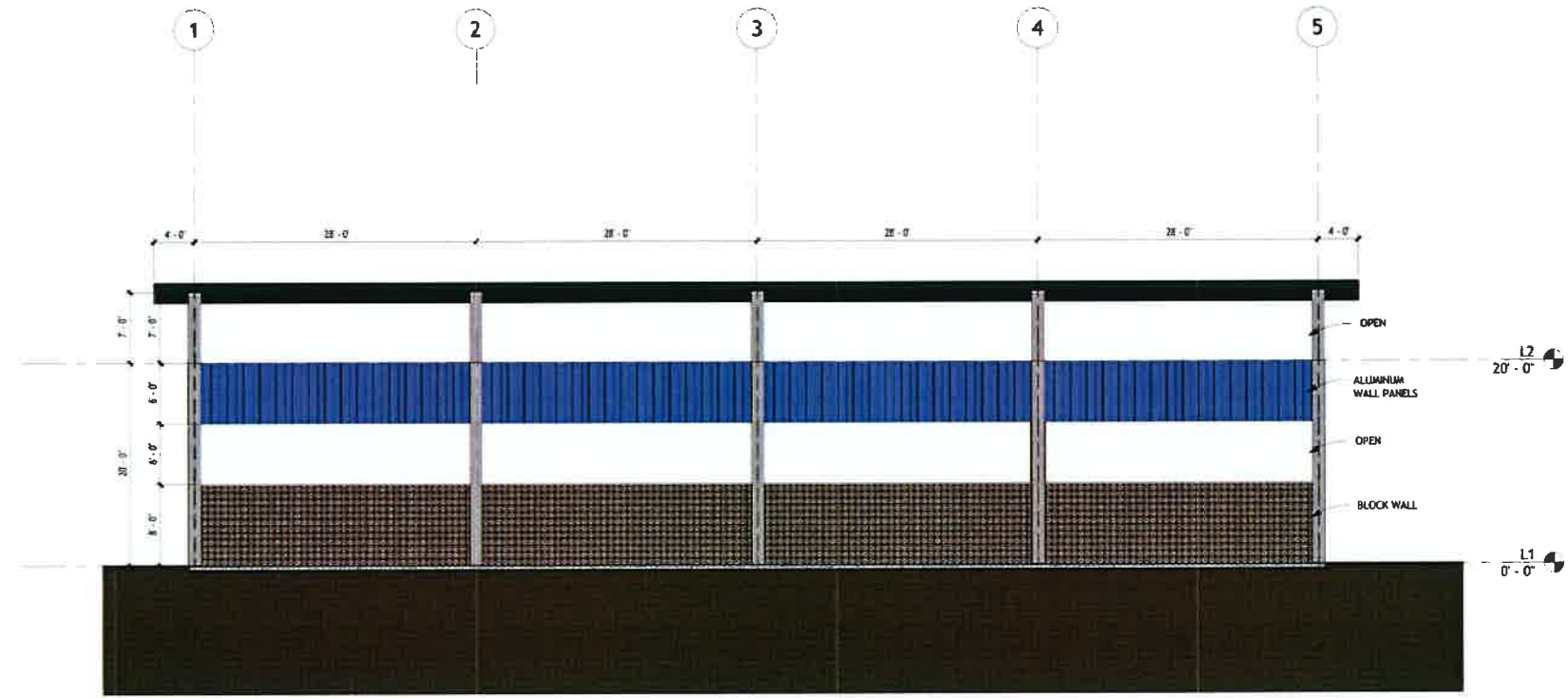
C

B

A

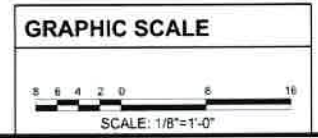


1 West Elevation
1/8" = 1'-0"



2 South Elevation
1/8" = 1'-0"

- NOTES:**
- 1. COLUMN SPACING BY PRE ENGINEERED BLDG. SUPPLIER
 - 2. ALUMINUM ROOFING
 - 3. ALUMINUM WALL PANELS AS SHOWN



07/15/2024

FOR REVIEW

1

DATE

BY

BY

BY

BY

BY

BY

BY

BY

BY

BY

BY

BY

BY

BY

BY

BY

BY

BY

BY

BY

BY

BY

BY

BY

BY

BY

BY

BY

BY

BY

BY

BY

BY

BY

BY

BY

BY

BY

ELEVATION PLANS

AS SHOWN

DATE

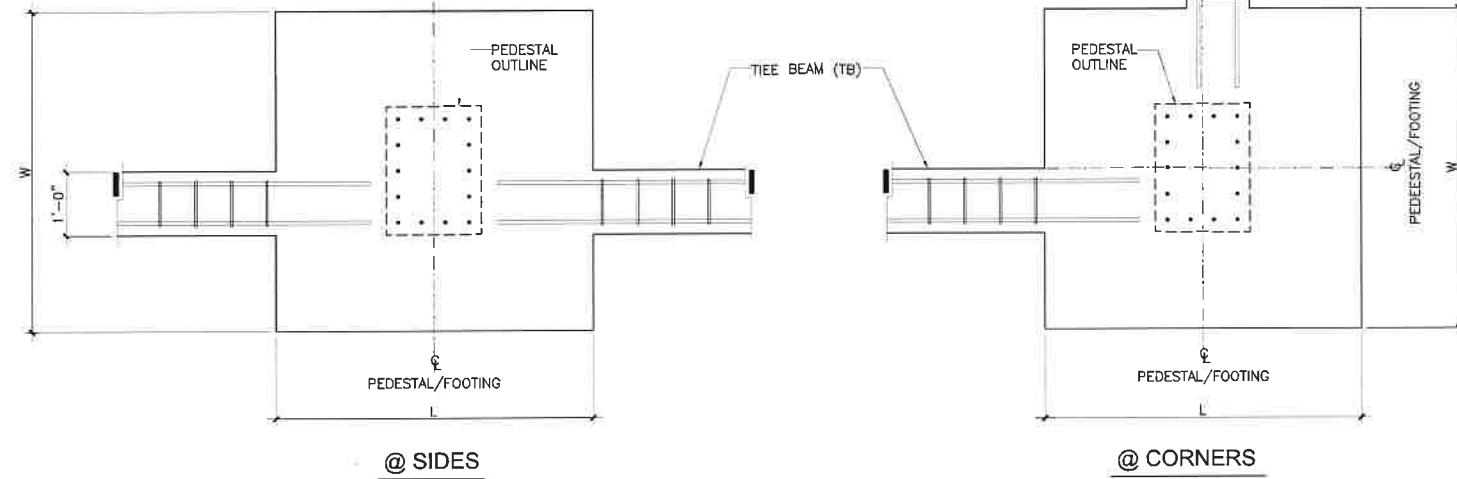
BY

BY

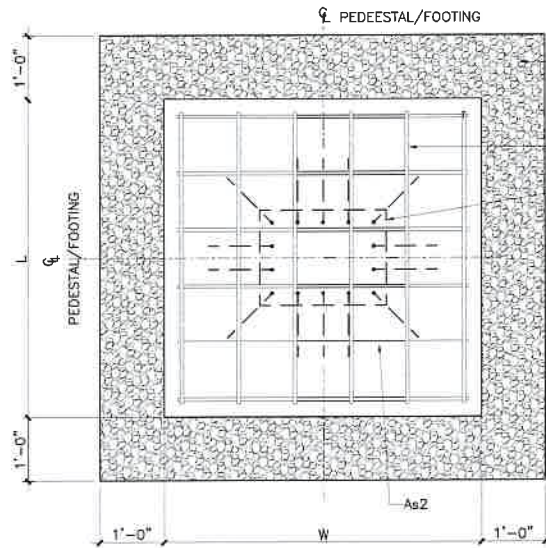
BY

BY

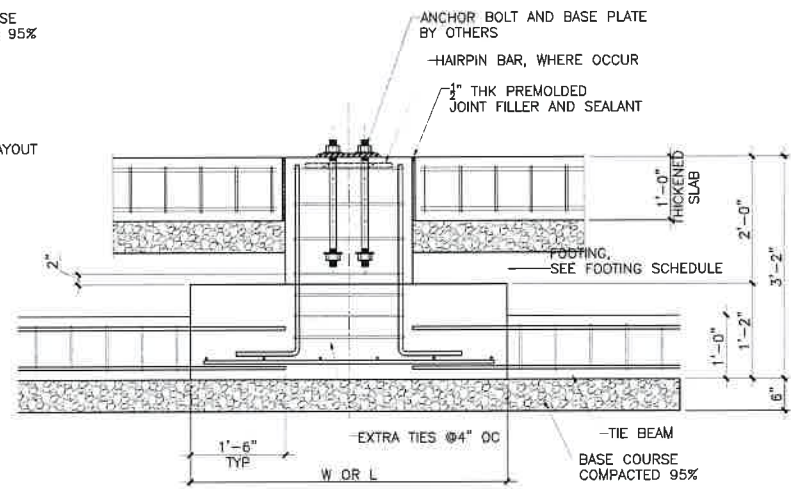
A3.1



3 BASE BEAM (BB) LOCATIONS
S-3.0 NTS

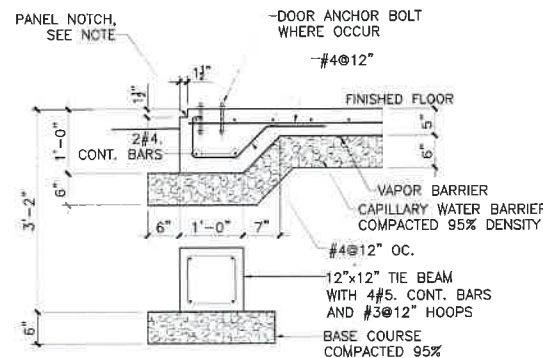


1 FOOTING (F) DETAIL
S-3.0 NTS

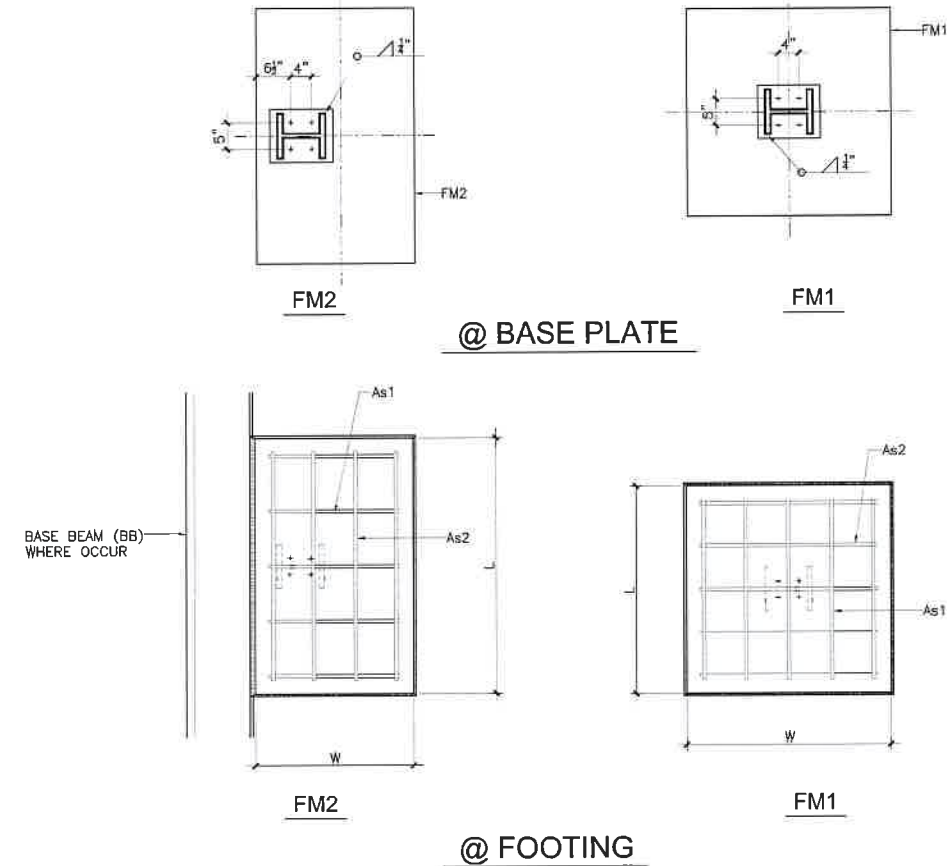


2 FOOTING (F) SECTION
S-3.0 NTS

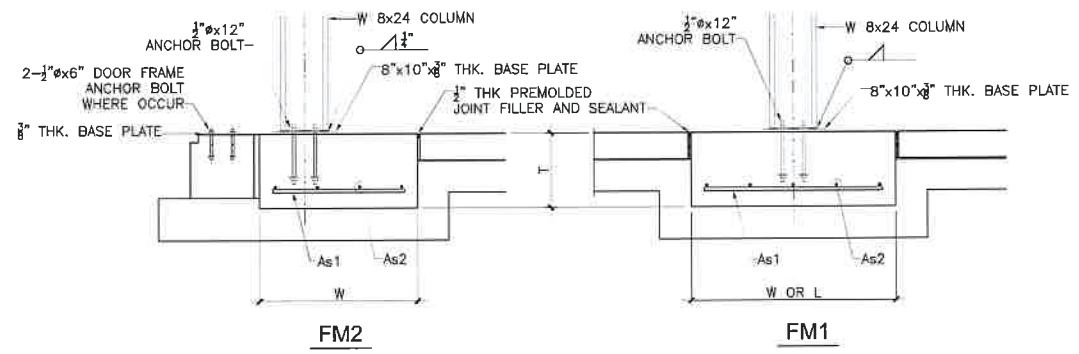
NOTE:
1. OMIT PANEL NOTCH AT DOOR OPENINGS



6 TIE BEAM (TB) AND THICKENED FLOOR SLAB
S-3.0 NTS



4 FOOTING (FM) PLANS
S-3.0 NTS



5 FOOTING (FM) SECTIONS
S-3.0 NTS

MARK	SIZE			REINFORCEMENT		REMARKS
	L	W	T	As1	As2	
F1	6'-0"	6'-0"	1'-2"	7#5@11"	7#5@11"	3 SETS EXTRA TIES
F2	4'-0"	4'-0"	1'-2"	5#5@10"	5#5@10"	3 SETS EXTRA TIES
F3	4'-0"	4'-0"	1'-2"	5#5@10"	5#5@10"	3 SETS EXTRA TIES
F4	6'-0"	6'-0"	1'-2"	7#5@11"	7#5@11"	3 SETS EXTRA TIES
F5	4'-0"	4'-0"	1'-2"	5#5@10"	5#5@10"	3 SETS EXTRA TIES
F6	5'-0"	5'-0"	1'-2"	7#5@9"	7#5@9"	3 SETS EXTRA TIES
FM1	4'-0"	4'-0"	1'-2"	5#5@10"	5#5@10"	FLASHED WITH FLOOR SLAB
FM2	4'-3"	3'-0"	1'-2"	8#5@6"	5#5@7"	FLASHED WITH FLOOR SLAB

07/15/2024

FOR REVIEW

1

DESIGNER: []

AUTHOR: []

CHECKER: []

FOOTING DETAILS AND FOOTING SCHEDULE

AS SHOWN

A4.1

